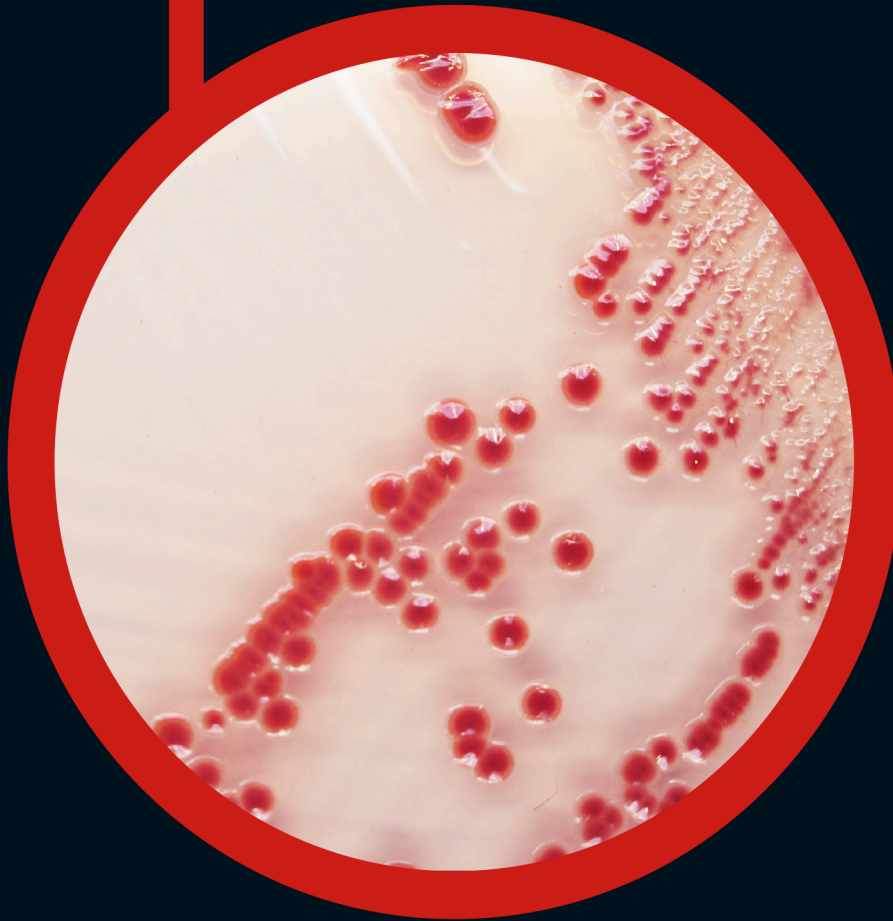


● CHROMagar™
Acinetobacter



For detection of *Acinetobacter*
and MDR *Acinetobacter* species

● CHROMagar™ Acinetobacter

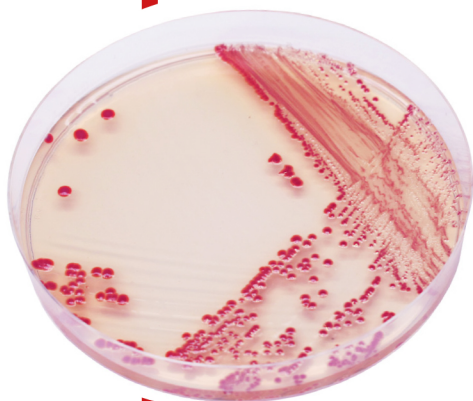


Plate Reading

For detection of *Acinetobacter* sp.:

- *Acinetobacter* sp.
→ red
- Other gram (-)
→ blue or mostly inhibited
- Gram(+) bacteria and yeasts
→ inhibited

For detection of MDR *Acinetobacter* sp.
(if using the optional supplement CR102):

- MDR *Acinetobacter*
→ red
- Non-MDR *Acinetobacter*
→ inhibited
- Other gram (-)
→ mostly inhibited
- Gram(+) bacteria and yeasts
→ inhibited

For detection of *Acinetobacter* and MDR *Acinetobacter* sp.

Background

Common bacteria widely spread in the nature, *Acinetobacter* has the capacity to survive in dry as well as moist environments. It becomes a source of infection in hospital environment when colonizing medical equipments, human skin and sometimes foodstuff. *Acinetobacter* species are generally not pathogenic for healthy people but are life threatening in compromised patients. It is often isolated in nosocomial infections cases, intensive care units, and can for instance cause nosocomial pneumonia, bacteraemia, and meningitis.

Especially, *Acinetobacter baumannii* is becoming a major hospital-acquired infection issue because of its often multi-drug resistance (MDR : resistance to C3G, quinolones, carbapenem etc). This contributes to the increase of morbidity and mortality.

Active surveillance is necessary to control its spread in the facilities, to reduce the risk of cross-contamination, and to identify the carriers. Rapid identification of patients that are colonized with *Acinetobacter* would lead to infection control practices aimed at preventing spread of the organisms.

Medium Performance

1 **One unique Red colour:** Detection of *A. baumannii* from traditional culture media might be a difficult and tedious task due to the abundance of background flora found in collected specimens, especially when using media based on differentiation by the lactose/non-lactose fermentation ability. To overcome these difficulties, CHROMagar Acinetobacter was designed as a highly selective medium, allowing the growth of *Acinetobacter* in conspicuously red colonies, after overnight incubation.

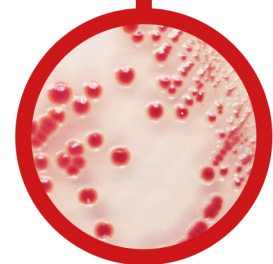
2 **FIRST chromogenic medium for *Acinetobacter* detection.**

3 **Screening of MDR *Acinetobacter*:** This medium can be supplemented to enhance MDR specificity allowing the growth of carbapenem-resistant strains.

Medium Description

Powder Base	Total 32.8 g/L Agar 15.0 Peptone and yeast extract 12.0 Salts 4.0 Chromogenic mix 1.8 Storage at 15/30°C - pH: 7.0 +/-0.2 Shelf Life 2 years
+ Supplement (included in the pack)	Growth and regulator factors 4ml/L Storage at 15/30°C Aspect: Liquid Form Shelf Life 3 years
CHROMagar MDR Supplement : CR102 Order separately	Selective mix 5 doses (1 dose qsf 1000ml of final media) Storage at 2/8°C Shelf Life 2 years

Usual Samples	stools, urine, wounds.
Procedure	Direct Streaking. Incubation 18-24h at 37°C Aerobic conditions.



Quality Control Strains

Acinetobacter baumannii ATCC® 19606 red
Acinetobacter calcoaceticus ATCC® 51432 red
E. faecalis ATCC® 29212 inhibited
C. tropicalis ATCC® 1369 inhibited

Using CR102 supplement:

Acinetobacter calcoaceticus ATCC® 51432 red
E. faecalis ATCC® 29212 inhibited
C. tropicalis ATCC® 1369 inhibited
Acinetobacter baumannii ATCC® 19606 inhibited

ATCC® is a registered trademark of the American Type Culture Collection

Communicatieweg 7,
3641 SG Mijdrecht, The Netherlands

☎ : 0031 (0) 297 286 848
☎ : 0031 (0) 297 287 570

✉ : info@biotrading.com
🌐 : www.biotrading.com

Order References

Please use these product references when contacting your local distributor:

5000 ml pack AC092 = AC092(B) powder base + AC092(S) supplement

Bulk on request

Optional :

5000 ml pack CR102 (MDR supplement)