

Reveal® 3-D for Egg

DOWNLOAD AND READ KIT INSTRUCTIONS COMPLETELY BEFORE PERFORMING TEST.



Materials Provided:

- 10 purple test devices
- 10 sample tubes and caps
- 10 sachets of Type 8 extraction buffer
- 10 sterile swabs
- 01 bottle swab wetting solution

Product Number: 902082Q

- Rinse/Food: 2.5 ppm egg protein (5 ppm egg)
- Swab: 5 µg/100 cm² egg protein (10 µg/100 cm² egg)
- Testing time: 5 minutes

Call 800.234.5333 to order or visit NEOGEN.com

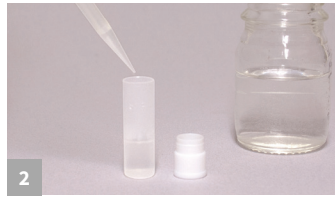
Materials Required but Not Provided (For Food Extraction Only):

- 8504 Reveal® 3-D Food Buffer
- 9381 50 mL graduated tubes

Rinse Sampling



1 Open Type 8 extraction buffer sachet and add to a sample tube.



2 Add 0.25 mL of the sample to the sample tube.

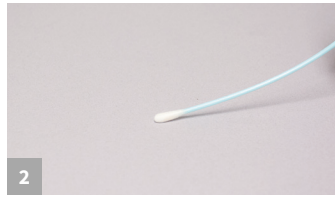


3 Secure cap and shake for 1 minute. Proceed to rinse/swab testing step #1.

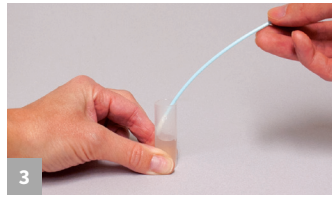
Swab Sampling



1 Open Type 8 extraction buffer sachet and add to a sample tube.



2 Gather the sample. For dry surfaces, moisten with swab wetting solution. Do not premoisten for wet surfaces.



3 Return the swab to the extraction buffer and break off into the tube.

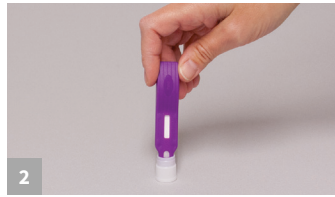


4 Secure cap and shake for 1 minute. Proceed to rinse/swab testing step #1.

Swab/Rinse Testing



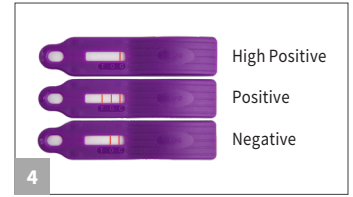
1 Remove the lid and fill with liquid from the tube.



2 Dip the Reveal 3-D device into the liquid within the lid, ensuring the liquid saturates the cavity.



3 When the liquid is seen running up the test window, place the device on a flat surface. Allow the test to develop for 5 minutes.



4 Interpret the results.

Food Sample Extraction & Testing



1 Add 20 mL (18 mL for liquid samples) of Reveal 3-D Food Buffer into 50 mL tube.



2 Add 2 g (2 mL for liquid samples) of the sample to tube.



3 Secure cap and shake for 1 minute.



4 With the tube tilted at approximately a 45 degree angle, dip the device into the tube; ensure that the cavity is saturated with the liquid. Move to steps 3-4 of previous section.

