

NG-Test[®] IgG-IgM COVID-19

A rapid test for the qualitative detection of IgG and IgM antibodies to SARS-CoV-2 (virus of COVID-19) in human whole blood, serum or plasma. All-in-one format.

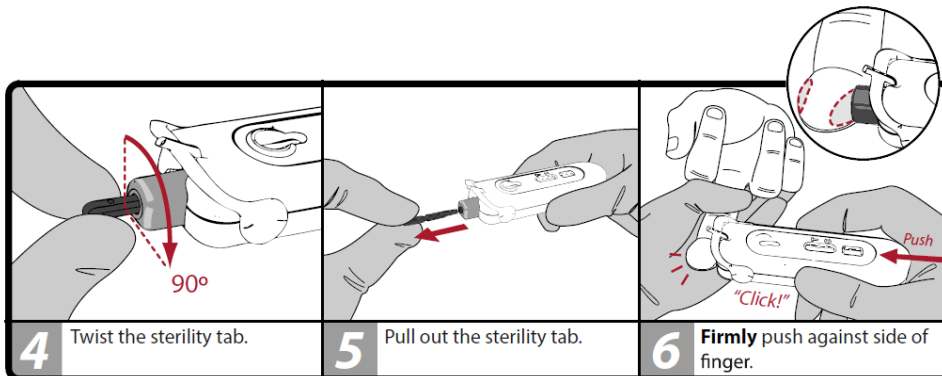
For professional in vitro diagnostic use only.

Ref: ENO102COV / Rev: 200506 / EN

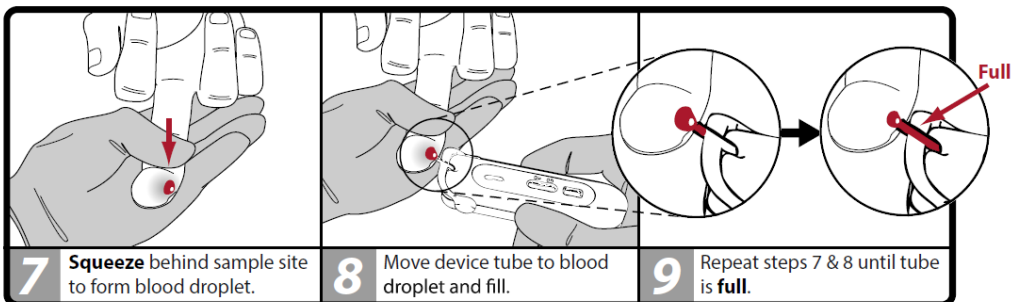
PREPARE FINGER



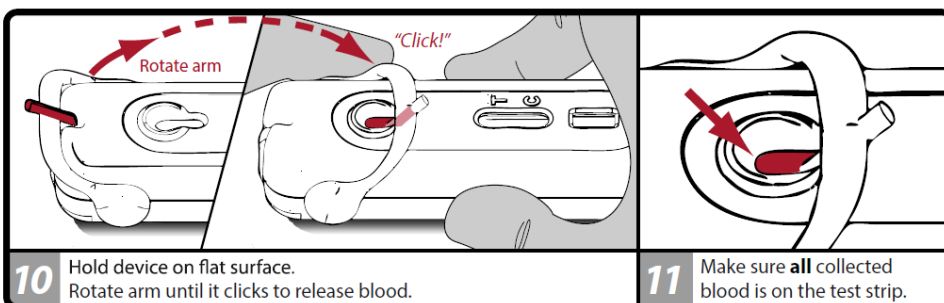
PUNCTURE FINGER



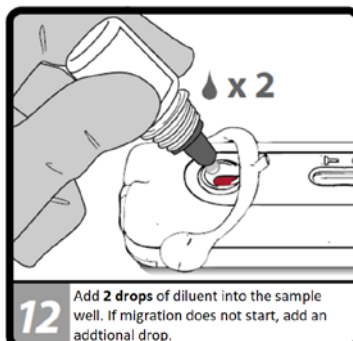
COLLECT BLOOD



DELIVER BLOOD



ADD DILUENT

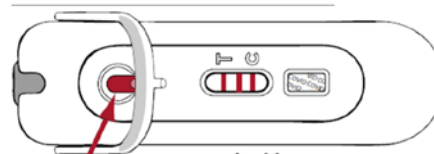


RESULT INTERPRETATION

Wait for 15 minutes for results.



NOTE: blood must be present on test strip.



	T	C	T	C	T	C	T	C
NEGATIVE		—	—	—		—		—
POSITIVE	—	—	—	—	—	—		—
INVALID	—		—			—		