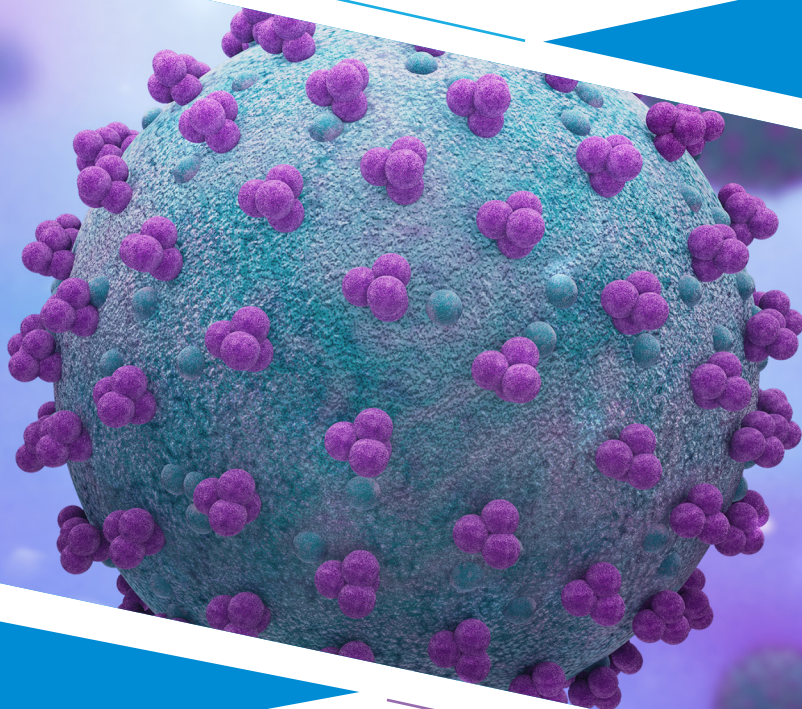


# COVID-19

Swabs, Transport Media and Tests



*Diagnostics & Ready Prepared Media is our **Culture!***<sup>®</sup>

# CORONAVIRUS

## COVID-19

### Flocked Swabs

We offer flocked swabs on-the-shelf for cell & virus specimen collection. Ideal for collecting of large amounts of cells and rapid elution of the specimens into the transport medium. All flocked swabs are certified, DNase-, RNase- free and suitable for molecular diagnostics.

#### Nasal Flocked Swab

Nylon flocked swab for nasopharyngeal clinical diagnostics, breakpoint at 80 mm.

Item no.	Description	Pack Size
MSC96000	Nasal Flocked Swab	Box, 5000 pcs

#### Throat Flocked Swab

Nylon flocked swab for laryngopharyngeal clinical diagnostics, breakpoint at 80 mm.

Item no.	Description	Pack Size
MSC93050	Throat Flocked Swab	Box, 5000 pcs

#### Nasal Flocked Swab + Transport Medium

Flocked swab combined with a transport tube, wrapped in one peel pouch.

Item no.	Description	Pack Size
202471	2.5 ml VTM + Nasal Flocked Swab	5000 pcs
MBT010	3 ml UTM + Nasal Flocked Swab	5000 pcs

# Transport Media

The purpose of transportation culture media is to maintain the viability of the virus contained in the sample, avoiding possible growth during transportation. Therefore, its formula is chemically and non-nutritive, to produce a reducing, buffered and osmotically balanced in the medium.

## Liquid Amies

Transport of all clinical swab specimens.  
The diameter of the cryovial is 12.4 mm, height 9.5 cm.

Item no.	Description	Pack Size
K737B001VB	1 ml in Cryovial	Box, 300 pcs.
K737B002VB	2 ml in Cryovial	Box, 300 pcs.



## PrimeStore® - MTM

FDA-approved viral inactivation molecular transport medium (MTM).

Item no.	Description	Pack Size
LH-PSMTM-5	PrimeStore® MTM	Box, 50 pcs

## VTM

Transport of viral clinical swab specimens.  
The diameter of the tubes are 16.2 mm, height 8.8 cm.

Item no.	Description	Pack Size
CO4070	3 ml Viral Transport Medium	Box, 20 pcs

# Saliva DNA/RNA Collection Kit

The Saliva collection kit is developed for a painless and easy-to-use collection process. The prefilled collector stabilizes DNA/RNA samples and it's simple screw-on funnel makes it ideal for safe transport.

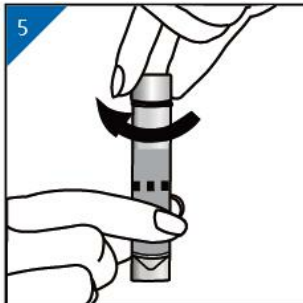
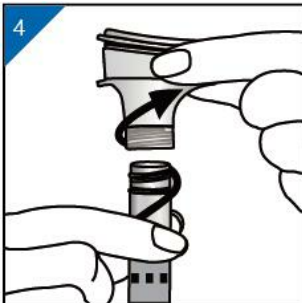
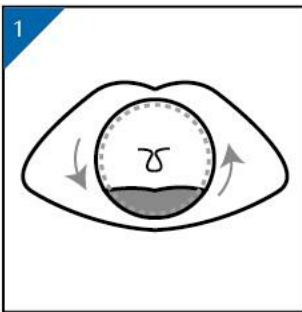
DNA/RNA Saliva Collectors to collect 3 ml saliva samples:

- 1 Funnel Pre-filled with DNA Stabilization buffer
- 1 Cap
- 5 ml Storage Tube



Item no.	Description	Pack Size
MHM-A	Saliva DNA/RNA Collection Kit	500 pcs

## How to collect the saliva?



# Serological testing

Serological rapid tests are used to identify antibodies and antigens in patient's sample. With a diagnostic result after 15 minutes and its easy-in-use protocol, serological tests can be performed on-site for screening purposes of personal, schools, retirement home's etc..

## NG•TEST®/ SARS-CoV-2 Ag/IgM & IgG

Rapid in vitro diagnostic test for the qualitative detection of SARS-CoV-2 antigen and for the qualitative detection of anti-SARS-CoV-2 antibodies IgM & IgG.

Item no.	Description	Pack Size
NGB-COV-S23-002	COVID-19 Antigen Cassette	Kit, 20 pcs
NGB-COV-W23-004	COVID-19 IgG-IgM Cassette	Kit, 20 pcs
NGB-COV-W23-102	COVID-19 IgG-IgM All-in-One test	Kit, 5 pcs

## SARS-CoV-2 Total Antibody EIA

A rapid, high-volume test that can identify previous infection of the novel coronavirus. This assay will identify those who have been exposed and developed antibodies against the virus, and those who have not.

Item no.	Description	Pack Size
IMMY/COV105	Clarus SARS-CoV-2 Total Antibody EIA	Kit, 5 x 96-well plates + reagents



# Molecular controls and RT-PCR testing

## SARS-CoV-2 Multiplex kit

The EBX-041 is a test using reverse-transcription and real-time amplification of viral RNA of SARS-CoV-2 based on amplification of 3 genes (RdRp Gene Target 1, RdRp Gene Target 2 and N Gene target 3). If at least one RdRp target is positive, a SARS-CoV-2 positive diagnostic can be called.

Item no.	Description	Pack Size
EBX-041-192	SARS-CoV-2 Multiplex kit	Box, 192 tests
EBX-042-192	EurobioPlex FluCoSyn / real-time RT-PCR	Box, 192 tests

## SARS-CoV-2 CE-IVD Control

This new CE-IVD control provides all the WHO-specified genomic targets with the unmatched precision and convenience of the Helix Elite™ line of molecular standards.

Item no.	Description	Pack Size
MBLHE0061S	SARS-CoV-2 Synthetic RNA Pool (N/E/RdRp/S Gene Targets)	Kit, 100 tests
MBLHE0062S	SARS-CoV-2 full process control (Pellet)	Kit, 25 tests
MBLHE0065N	Inactivated SARS-CoV-2 Whole Virus (Pellet)	Kit, 25 tests





# Aspergillus GM Lateral Flow Assay

**ARE YOU SCREENING FOR  
INVASIVE ASPERGILLOSIS IN  
CRITICAL PATIENTS?**

*It's About*  
**TIME**

Multiple studies has shown that critical patients with SARS-CoV-2 disease (COVID-19) have an increased risk of developing invasive pulmonary aspergillosis co-infections. With the Sōna Aspergillus LFA assay from our trusted partner IMMY diagnostics patients can be tested is less than an hour.

Item no.	Description	Pack Size
IMMY/AF2003	Aspergillus Galactomannan Lateral Flow Assay	Box, 50 tests

**sōna**

**ASPERGILLUS GM**  
LATERAL FLOW ASSAY





Visit our website for more information: [www.biotrading.com](http://www.biotrading.com)



**bioTRADING Benelux BV**

Communicatieweg 7

3641 SG Mijdrecht

The Netherlands

**T** +31(0)297-286848

**E** [sales@biotrading.com](mailto:sales@biotrading.com)

**bioTRADING Belgium BVBA**

Haachtsebaan 143

3140 Keerbergen

Belgium

**T** +32(0)15-500100

**E** [info@biotrading.be](mailto:info@biotrading.be)